



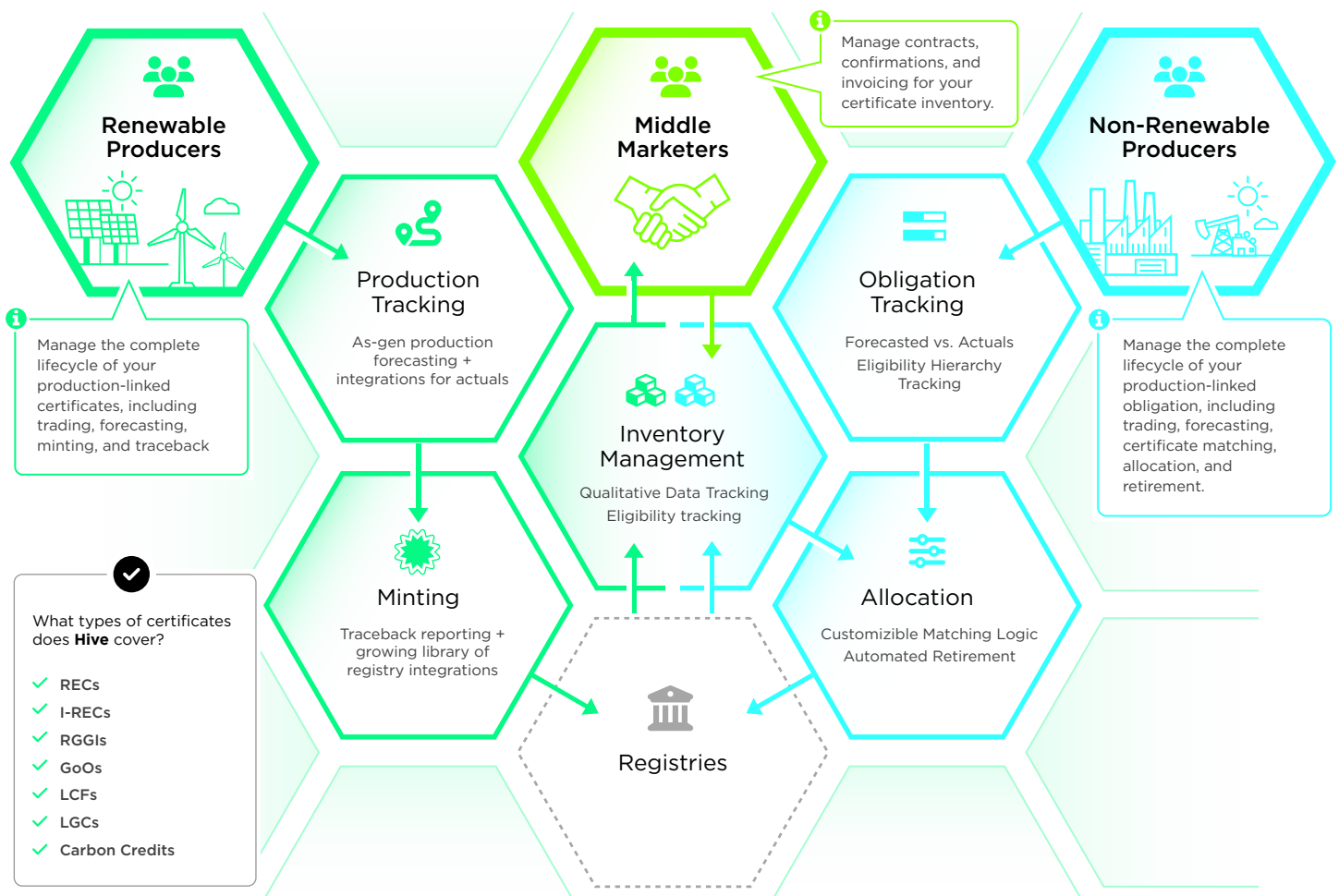
Trading in Renewables? We Can Handle That.

Evolving energy markets require an ETRM that evolves with your trading needs. Molecule has you covered.

As the evolution of the energy market presents new challenges for energy traders and risk managers, ETRM software must adapt - and Molecule has been at the forefront of the movement to renewables since 2016.

Molecule empowers you to manage the full lifecycle of renewable instruments, commodities, and their unique attributes. From buying and selling Guarantees of Origin, carbon credits, and offsets to modeling forecasts by facility, Molecule is designed for it. You get the full picture of your trade portfolio, renewable instruments, and renewable commodities - all in one place.

How Molecule + Hive Supports Renewable Certificate Trades



Managing Renewables with Hive

Hive, Molecule's add-on for renewables, is designed for companies trading renewable commodities and renewable instruments like Guarantees of Origin (GOs), RECs, RINs, and RGGIs. Hive enables you to manage your renewable certificates together with your other trades in one system of record.

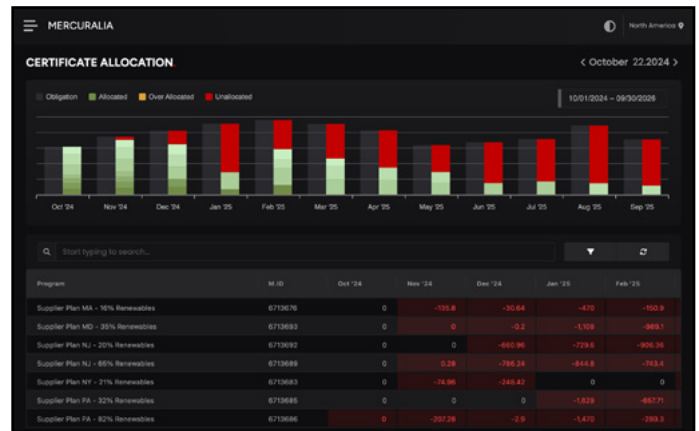
Hive gives you access to specialized functionality and reporting built on our extensive experience working with companies trading renewables. It automates manual work and empowers you to manage the nuanced, full lifecycle of renewable instruments, including minting, eligibility, and optimization.

Hive makes it easy to:

- Manage the full lifecycle around credits and offsets - from estimate to retirement
- Manage your inventory of forecasted, contracted, and delivered credits and offsets and allocate them to meet demand obligations
- Automatically match physical certificates with the trades and commodities that generated or consumed them
- Capture type-specific fields, such as eligibility, class, and expiry, as well as certificate numbers - helping you to manage inventory and prevent double-counting
- Optimize renewable instrument trades based on your strategy, including obligations, cost of obligations, inventory of certificates and their vintages, expirations and costs, and cross-eligibility
- Access powerful custom reports so you have a comprehensive understanding of your renewables portfolio - i.e. how credits offset carbon positions, inventory allocation gaps, the value of your inventory, regulatory compliance, and more

Ready to see what all the buzz is about?

Discover the possibilities with Hive at molecule.io/hive

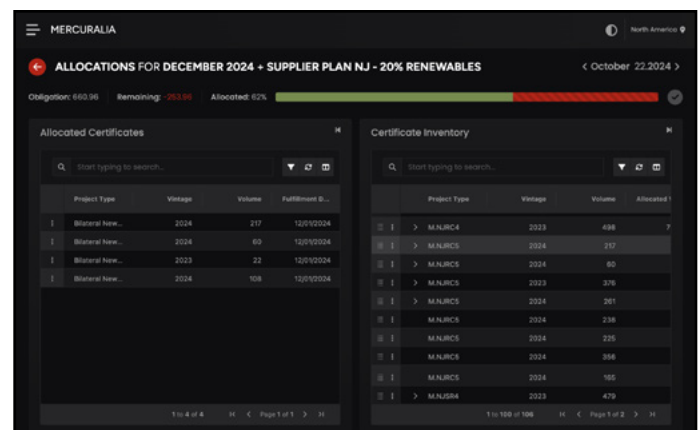


Obligations

Obligations can be captured at the plant level or through trades in Molecule and aggregated to vintage and eligibility specifications.

Allocations

A Molecule-built algorithm is used to systematically recommend credit allocations, from inventory to obligations, optimizing the overall costs and prioritizing obligations based on their importance.



Inventory

Track renewable credit inventory, including type, class, vintage, expiration, cross-eligibility, and other custom qualitative reference data.

